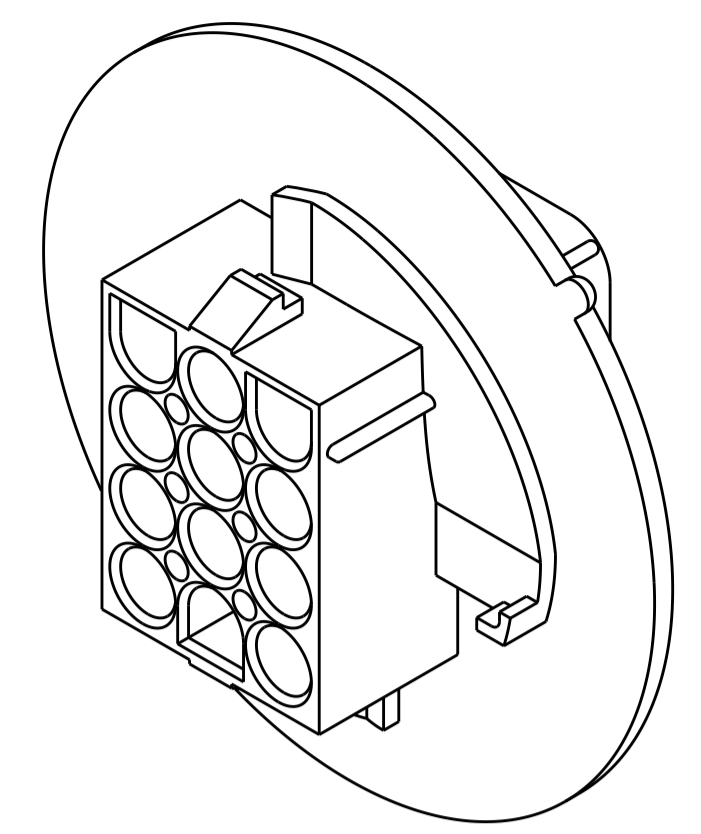
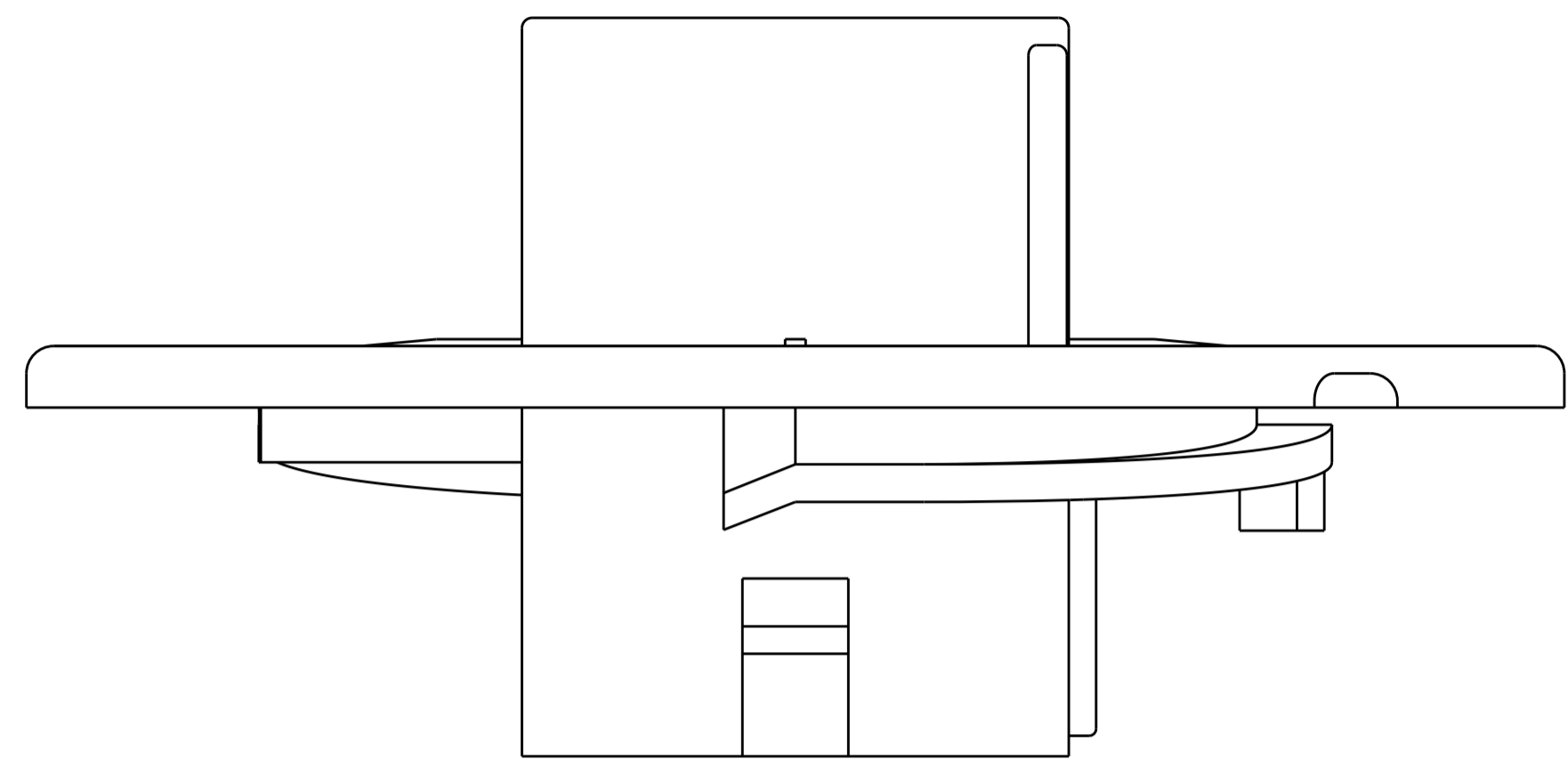
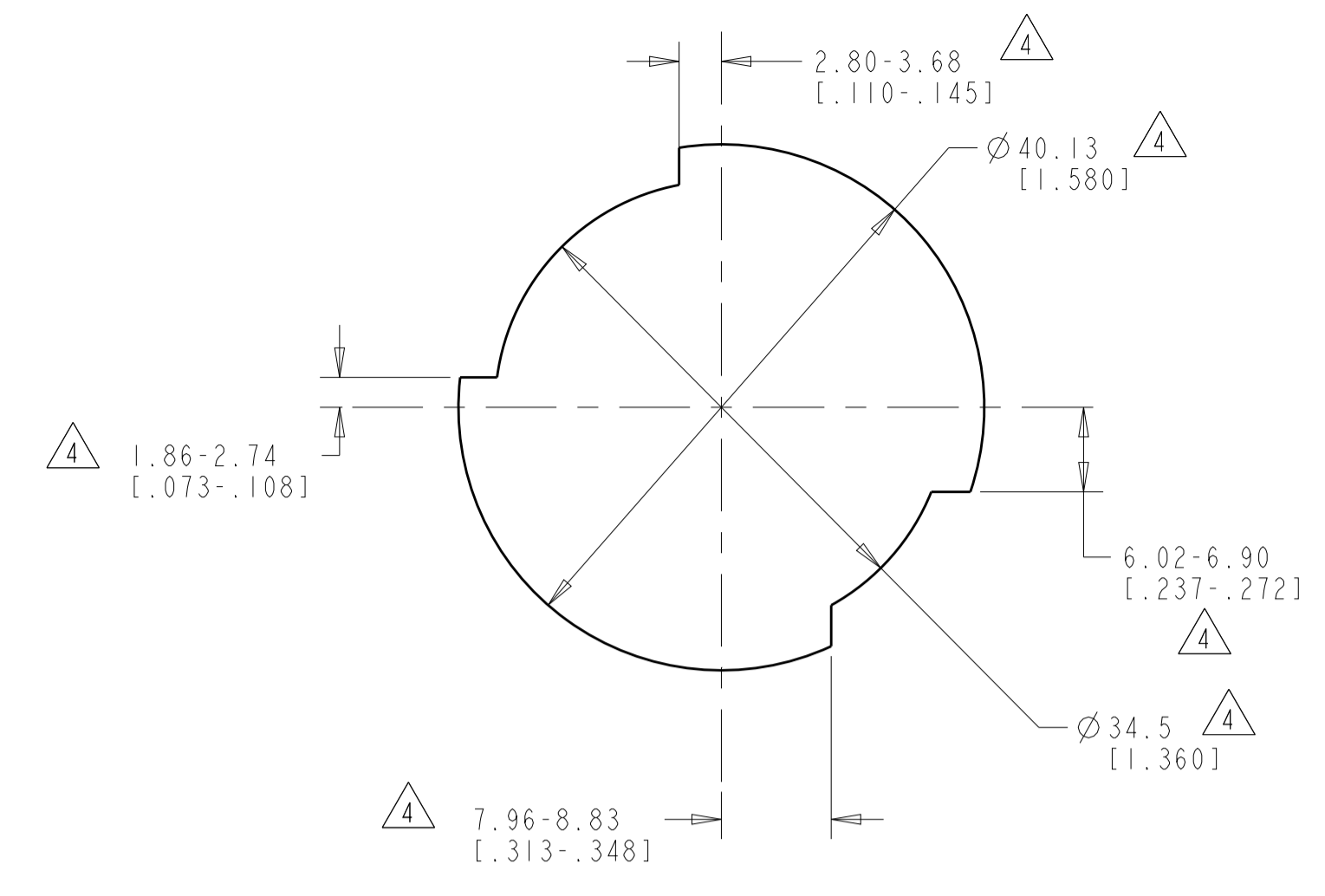


LOC	DIST	REVISIONS					
CM	00	P	LTN	DESCRIPTION	DATE	DWN	APVD
		K		REVISED PER ECR-10-022954	03MAR2011	HMR	TM
		K1		REVISED PER ECR-14-001377	17APR2015	AV	DZ

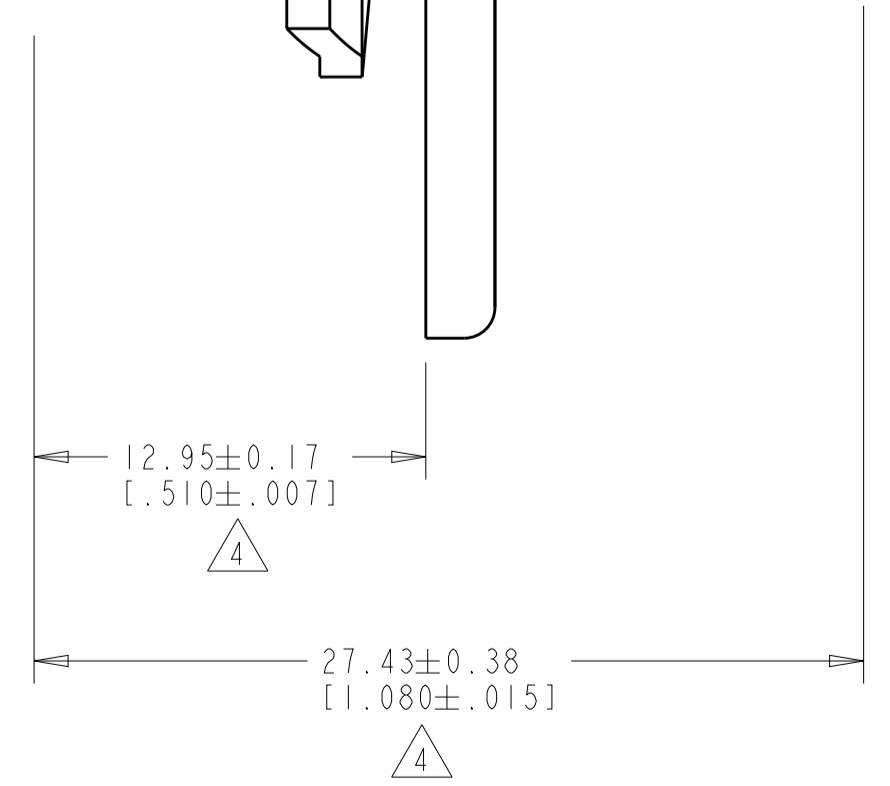
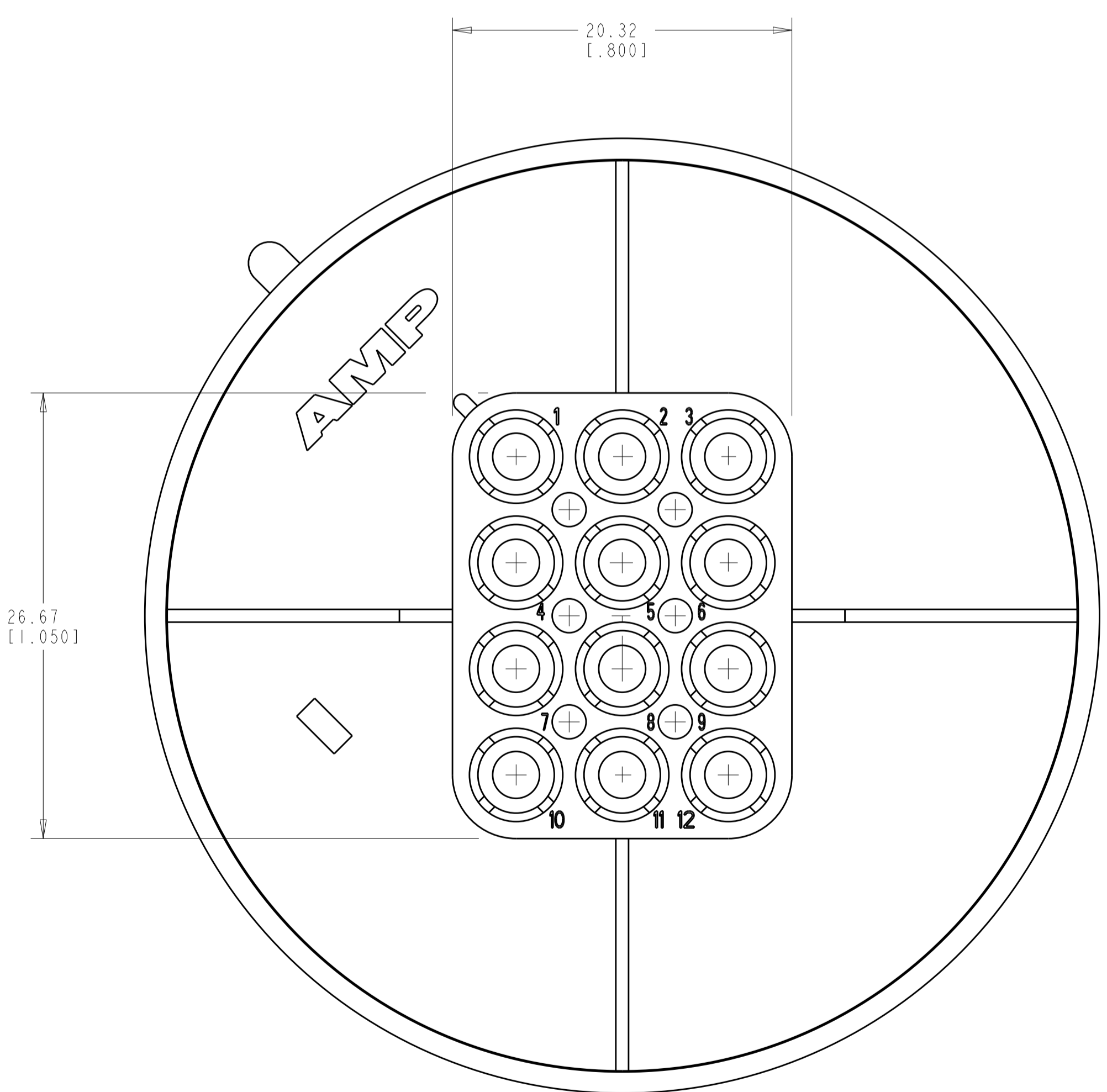
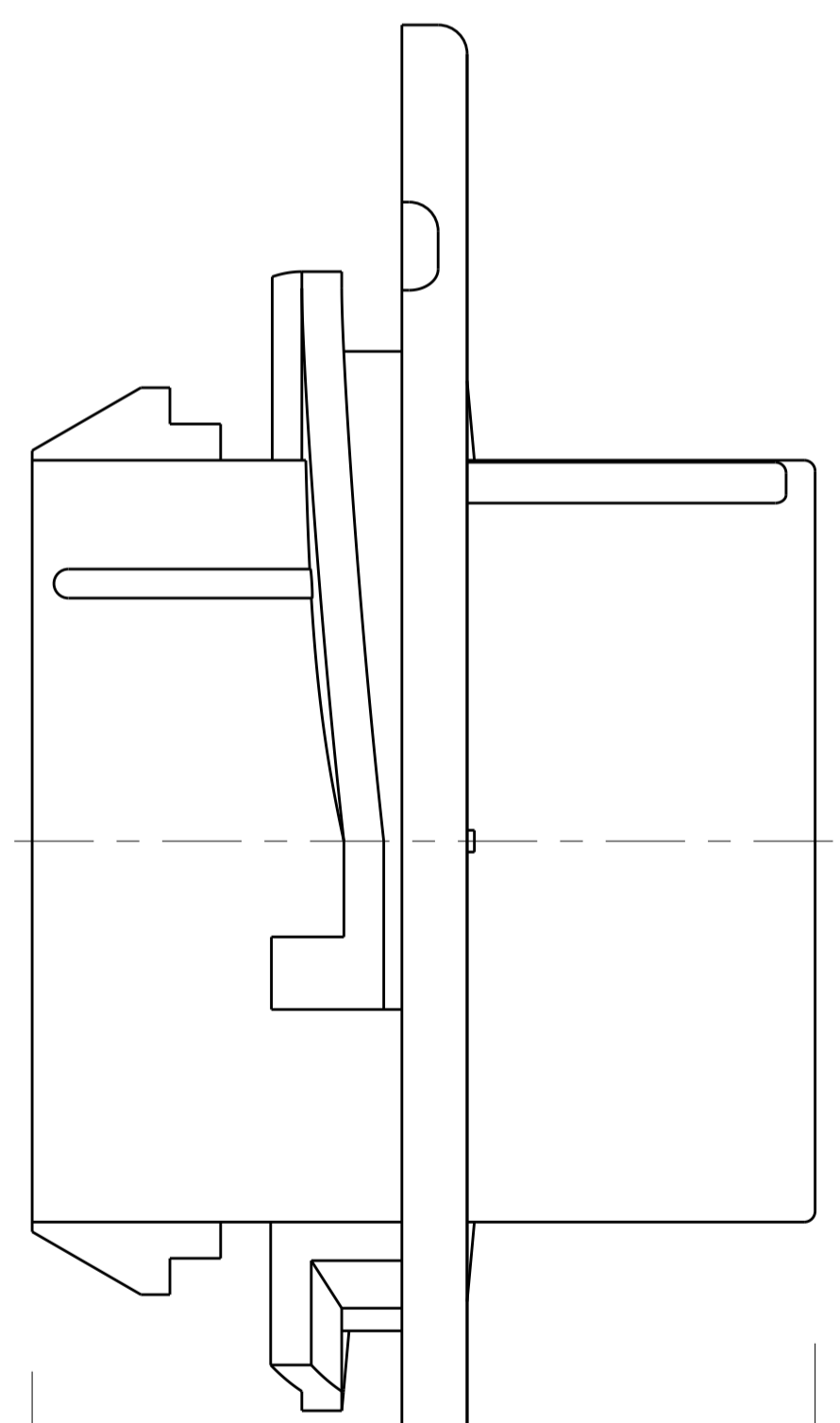
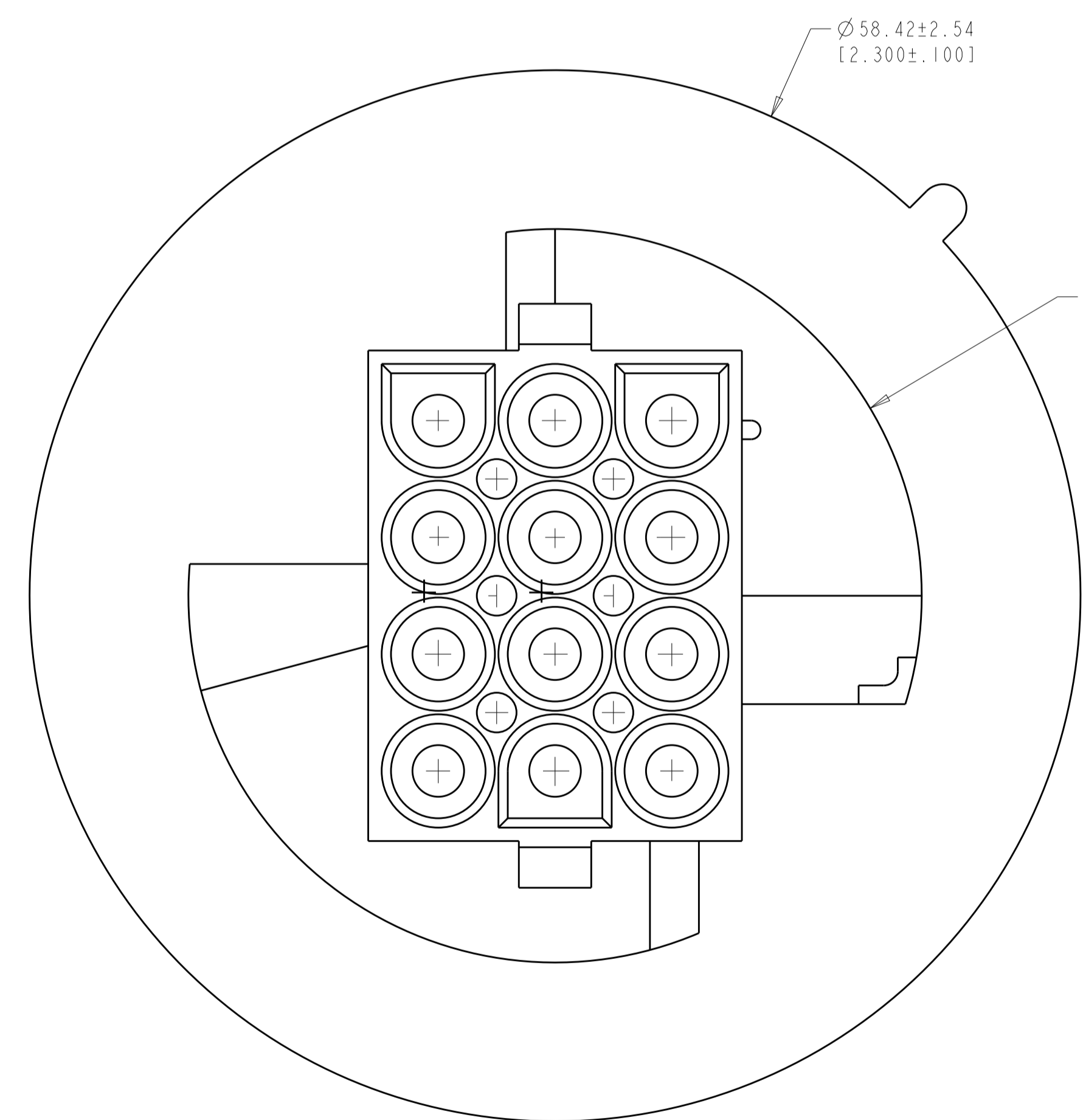


3-DIMENSIONAL MODEL  
SCALE 2:1

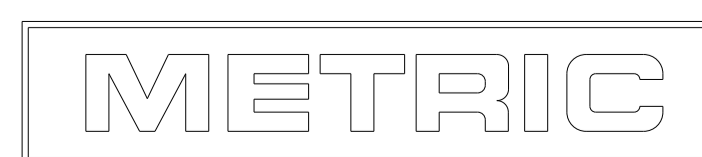


RECOMMENDED CUT OUT  
SCALE 2:1

- MATES WITH APPROPRIATE UNIVERSAL MATE-N-LOK™ PLUG.
  - RECOMMENDED PANEL THICKNESS 0.76 - 2.29 [0.030 - .090].
  - PANEL MUST BE PUNCHED SO THAT THE HOUSING ENTERS THE PANEL IN THE SAME DIRECTION AS THE PUNCH.
- ⚠ DIMENSIONS INDICATED ARE REFERENCE. ADDITIONAL GROWTH DUE TO SUBSEQUENT MOISTURE ABSORPTION MAY OCCUR.



SUPERSEDED BY 794716-2	COLOR	PART NUMBER
	BLACK	1-794716-9
	GRAY	1-794716-8
	BLUE	1-794716-6
	GREEN	1-794716-5
	YELLOW	1-794716-4
	ORANGE	1-794716-3
	RED	1-794716-2
	BROWN	1-794716-1
PRELIMINARY	RED	794716-3
	BLACK	794716-2
	NATURAL	794716-1
	COLOR	PART NUMBER



THIS DRAWING IS A CONTROLLED DOCUMENT.

DIMENSIONS: mm [INCHES]

TOLERANCES UNLESS OTHERWISE SPECIFIED:  
 0 PLC ±  
 1 PLC ±0.51 [0.020]  
 2 PLC ±  
 3 PLC ±  
 4 PLC ±  
 ANGLES ±40° 30'

MATERIAL: NYLON UL 94V-2

FINISH: -

DWN: R. WHITAKER 08-OCT-1999  
 CHK: M. TRULL 08-OCT-1999  
 APVD: M. TRULL 08-OCT-1999

NAME: CAP. 12 CIRCUIT, UNIVERSAL MATE-N-LOK(TM), SPECIAL

SIZE: A1 CAGE CODE: 00779 DRAWING NO: 794716

WEIGHT: -

CUSTOMER DRAWING

SCALE: 4:1 SHEET 1 OF 1 REV: K1

TE Connectivity